

## Physiological Aspects

Levels: 2 and 3

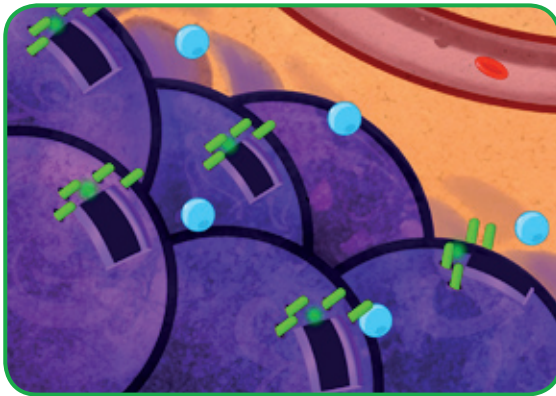
Subject: Glucose – Insulin – Pancreas

TEACHER

STUDENTS



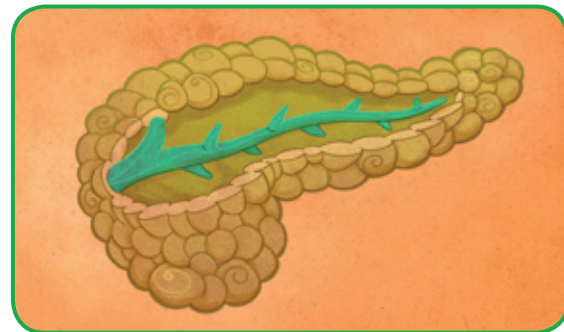
[www.fundaciondiabetes.org](http://www.fundaciondiabetes.org)



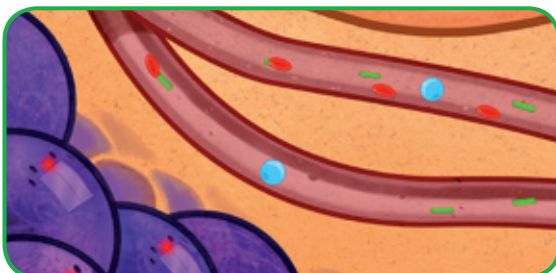
But, glucose can only get into cells with the help of **insulin**.

**Insulin** is in charge of opening cell doors, to let the glucose in. It's like a key, to the cell door!

Insulin is produced by an organ, known as the **pancreas**. Your pancreas is right next to your stomach.



As soon as the **pancreas** realizes we've eaten and that there's glucose in the blood, it automatically produces the exact amount of insulin (or cell door keys) our body needs for all the millions of cells.



The **insulin**, then, travels with the glucose - along the bloodstream - to all the cells in our body.